



March 20

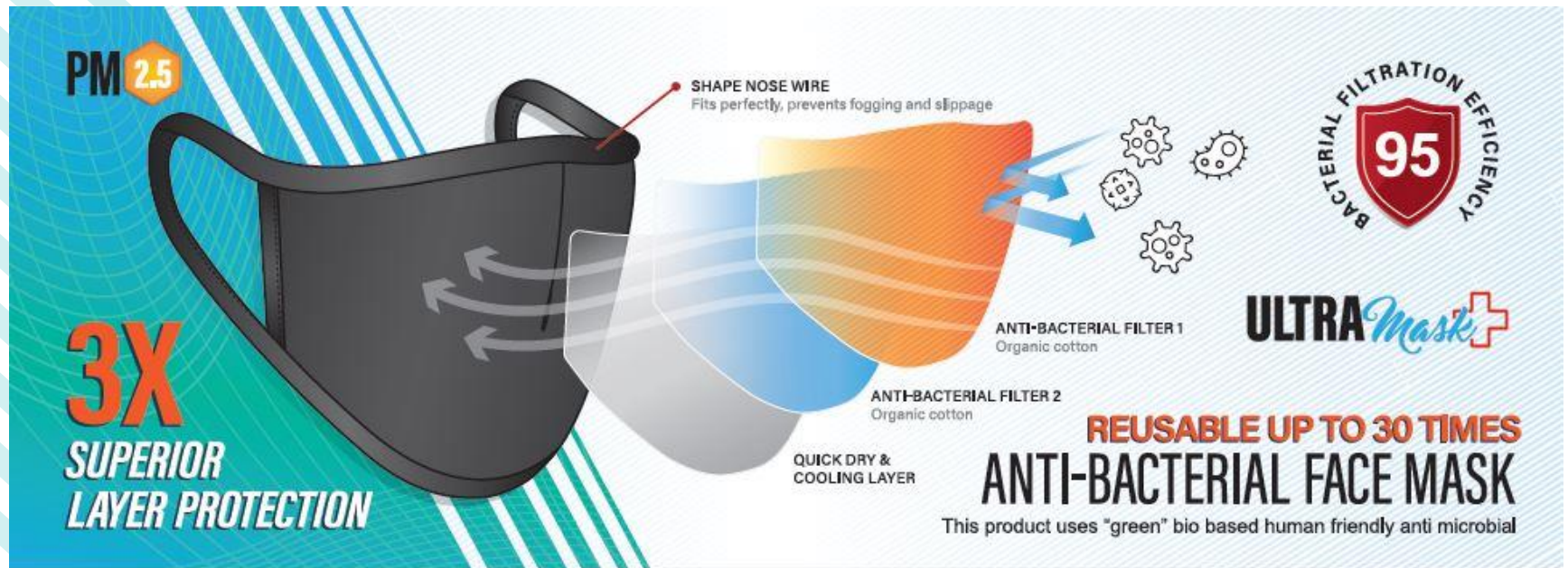
PRODUCT DESIGN



**ANTI MICROBIAL FABRIC
WITH 95% BACTERIAL
REDUCTION**



PRODUCT SPECIFICATION



MASK COMPOSITION

- The Mask is made out of three Superior layers; 2 layers of anti-bacterial organic cotton fabric with a layer of cooling and moisture absorbing material.
- Anti-bacterial means it can destroy bacterial and fungi, suppresses their growth and their ability to reproduce.
- The Organic cotton will allow users, even user with sensitive skin to eliminate irritation.

PRODUCT SPECIFICATION

ANTI-BACTERIAL FACE MASK

SUPERIOR TRIPLE LAYER PROTECTION



HAND
WASHABLE

Product is reusable.
Hand washable, up to **30** washes.



The anti-bacterial organic cotton kills bacteria and suppresses bacterial growth. No skin irritation.



Quick dry and cooling lining reduces heat retention.



The triple layer technology protects you from harmful bacteria, and other air pollutants



Smooth airflow and comfortable breathing.

PRODUCT SPECIFICATION



The mask has effective Bacterial Filtration Efficiency
(BFE) of **95%**. It filters 95% of bacteria.

PRODUCT SPECIFICATION

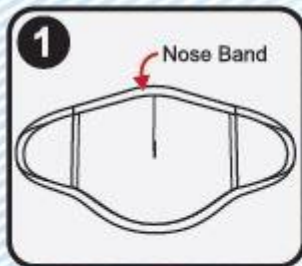
- Kills **95% of these bacteria**; Staphylococcus aureus, Escherichia coli, Klebsiellas pneumoniae
- Uses '**Green**' **Bio based** human friendly anti-microbial. It does not contain any organotin or other organo-metallic compounds.
- The anti-bacterial **creates a bacteriostatic surface** on the fabric killing the bacteria.

PRODUCT SPECS & WEAR METHOD

	Measurements	XS	S	M	L
	MASK HEIGHT	4 in(10cm)	4 3/4 in(12cm)	5 1/2 in(14cm)	6 in(15.25cm)
	MASK WIDTH	5 1/2 in(14cm)	6 1/4 in(15.8cm)	6 3/4 in(17cm)	7 1/2 in(19cm)

How to wear your mask for best performance

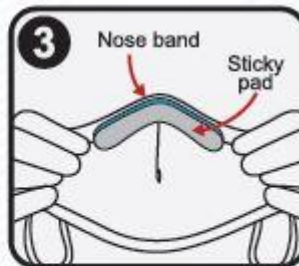
* Sticky pad is provided for sizes XS and S. Steps 2-3 applicable only for XS and S.



Remove the mask and unfold the mask.



Bend the sticky pad with sticky side facing outside



Firmly press the sticky pad to stick on top of the nose band area.



Hold the mask via the ear loops and ensure that it covers your nose and mouth. Then place the loops over your ears.



Pinch the metal strip or stiff edge of the mask so it takes the shape of your nose bridge.

PRODUCT WASH INSTRUCTION

Care instruction

Gentle hand wash at 30 degrees. Line dry after.



HAND
WASHABLE



DO NOT
BLEACH



DO NOT
TUMBLE
DRY



TEMP



DO NOT
IRON



DO NOT
DRY
CLEAN



LINE
DRY

Mask is hand washable and reusable up to 30 washes

PRODUCT PACKAGING

ULTRAMask+



5 zip locks in a box



ANTI-BACTERIAL FABRIC LAB TEST

CONDUCTED BY ITS SINGAPORE



Total Quality. Assured.

TEST REPORT

NUMBER : SINT20801565

DATE : 20-Feb-2020

TEST CONDUCTED (AS REQUESTED BY THE APPLICANT)

1. Anti-Bacterial Finishes on Textile Materials

(AATCC 100-2012) Test no. (2) IIA(ii), Machine Wash inside out at 80°F, Gentle cycle, Followed by tumble dry low.)

**99.9% of
Bacterial
Reduction**

		(A)	<u>Requirement</u>
0 Hour (B)	1.0×10^6		
24 Hour (A)	1.0×10^6		-
% Reduction (R)	0%		
		(B)	<u>Requirement</u>
0 Hour (B)	1.0×10^6		
24 Hour (A)	7.0×10^2		-
% Reduction (R)	99.9		
		(C)	<u>Requirement</u>
0 Hour (B)	8.0×10^6		
24 Hour (A)	7.0×10^5		-
% Reduction (R)	98.5%		

BFE TEST RESULTS BEFORE WASH

NTU Food Science and Technology Lab by Professor William Chen

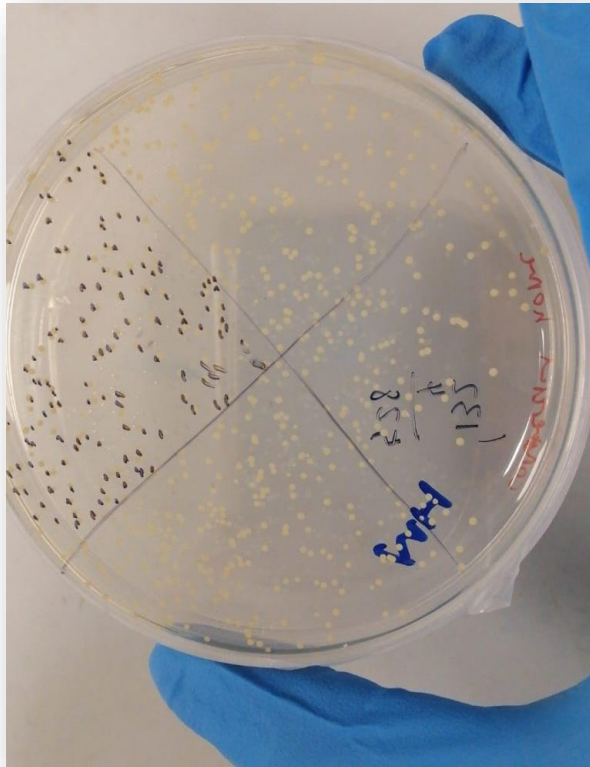
Table 1. BFE test results

Type of face mask	Number of colonies
Commercial masks	
N95	28
3M Dust mask	0
Top safe N95 (Green) with 95 % BFE	0
Black cloth <u>mask</u> (commercial brand unknown)	101
Commercial surgical mask with 99% BFE	528
<u>Ghim Li</u> face masks	
Black double, White single	0

BFE TEST RESULTS BEFORE WASH

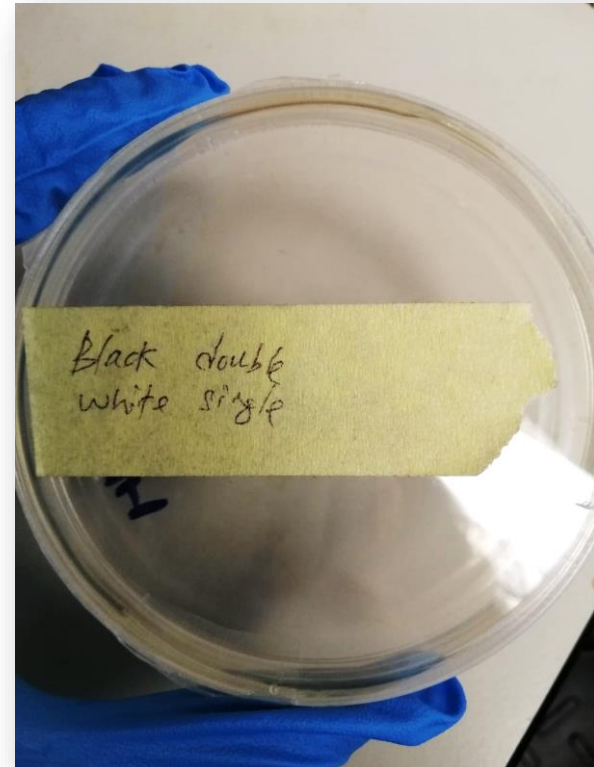
NTU Food Science and Technology Lab by Professor William Chen

Commercial Surgical Mask



528 Colonies

Ghimli Mask



0 Colonies

BFE TEST RESULTS – BEFORE WASH



Total Quality. Assured.

TEST REPORT

NUMBER : SINT20802464

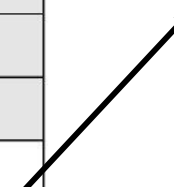
DATE : 13-Mar-2020

RESULTS

Sample Description : Fabric Face Mask (Face Side Matt Coating)

Test sample/ controls	Stage 1, CFU	Stage 2, CFU	Stage 3, CFU	Stage 4, CFU	Stage 5, CFU	Stage 6, CFU	Sum of Total plate count for the 6 sieves, CFU	Average Count for Controls, CFU	BFE (%)	Average BFE (%)
-ve Control Before	0	0	0	0	1	0	1	2		
-ve Control After	0	0	2	0	0	0	2			
+ve Control 1	201	397	688	507	435	261	2489	2461		
+ve Control 2	198	406	715	658	359	245	2581			
+ve Control 3	219	477	650	408	344	216	2314			
Sample 1	0	0	0	0	11	0	11		99.55	99.34
Sample 2	0	0	0	0	0	12	12		99.51	
Sample 3	1	0	0	0	2	23	26		98.94	

BFE: 99.34



BFE TEST RESULTS – AFTER 30 WASHES

intertek

Total Quality Assured

TEST REPORT

NUMBER : SINT20802676

DATE : 23-Mar-2020

TEST CONDUCTED (AS REQUESTED BY THE APPLICANT)

30x wash	4.0 E+06	95.6 %
	4.4 E+06	95.2 %
	3.8 E+06	95.8 %
	3.7 E+06	95.9 %
	4.1 E+06	95.5 %
	Average	95.6 %

BFE: 95.6%

Conclusion:

As the face mask can filter the *S. aureus* ATCC 29213 bacteria which has a size of ~0.8 μm by up to 99.9998%, the face mask meets the fine particulate matter of 2.5 ($\text{PM}_{2.5}$).

PRODUCT SPECIFICATION



- The product is made with 100% Organic cotton.
- The Organic cotton will allow users, even user with sensitive skin to eliminate irritation.

PRODUCT SPECIFICATION



- The inner lining is made of a **cooling and quick dry** fabric
- It provides a **cool touch** to the human face
- It **absorbs perspiration** and dries 37.5% faster than normal fabric
- The fabric provide **comfort and has a soft hand feel**

BV SINGAPORE TEST REPORT



TEST PROPERTY

TEST RESULTS

ABSORBENCY OF TEXTILES (AATCC 79-18)

	A	B
ORIGINAL - WETTING TIME (SECOND)	3.0	2.0
AFTER 20 WASHES - WETTING TIME (SECOND)	2.5	2.5

DRYING RATE OF TEXTILES AT THEIR ABSORBENT CAPACITY: AIR FLOW METHOD (AATCC 200-17)

A: ORIGINAL	
DRYING RATE (ML/H)	3.17
ABSORBENT CAPACITY (ML)	0.1
A: AFTER 20 WASHES	
DRYING RATE (ML/H)	2.45
ABSORBENT CAPACITY (ML)	0.1
B: ORIGINAL	
DRYING RATE (ML/H)	2.99
ABSORBENT CAPACITY (ML)	0.1
B: AFTER 20 WASHES	
DRYING RATE (ML/H)	2.39
ABSORBENT CAPACITY (ML)	0.1

As it is a quick dry and cooling fabric, it dries at a faster rate than regular fabric

PRODUCT SPECIFICATION



Control Union Certifications B.V.
Meeuwenlaan 4-6, 8011 BZ, Zwolle, Netherlands
+31 38 426 0100
www.controlunion.com

CERTIFICATE OF COMPLIANCE

(Scope Certificate)

Certificate No: CU1019756GOTS-2019-00021405
Registration No: 1019756

Control Union Certifications declares that

Maxim Textile Technology Sdn bhd
Plo 54 Jalan Perindustrian 4 Kawasan Perindustrian Senai 2 Senai Johor Malaysian
81400 Johor
Malaysia

has been inspected and assessed in accordance with the
Global Organic Textile (GOTS) 5.0

and that products of the categories as mentioned below (and further specified in the annex) comply with this standard:

Fabrics

Processing steps / activities carried out under responsibility of the above-mentioned company (by the operations as detailed in the annex) for certified products

Dyeing, Trading, Knitting, Finishing

This certificate is valid until:
2020-10-21
This certificate is valid from:
2019-10-22

Place and date of issue:	Stamp of the issuing body	Standard's Logo
 2019-10-22, Zwolle Name of authorized person: On behalf of the Managing Director Udaya Kumari Herath Certifier		

FACTORY CERTIFICATION

The Product is produced under the Oeko -tex 100 standards

